

Howell Mill

1952-1985 HOWELL MILL ROAD, ATLANTA, GA 30318



Howell Mill is a collection of high-profile storefronts lining Howell Mill Road at its intersection with Collier Road. A mix of new construction and thoughtfully renovated mid-century buildings, the shops have excellent visibility, access, and parking. Over 1,000 residences are within walking distance and the property is nestled in a high-income Buckhead neighborhood. Over 400,000 cars per day travel I-75 just south of the site, providing regional access and proximity to West Midtown and Piedmont Hospital.

TENANTS

HOWELL'S
— kitchen & bar —

Cultivate
food + coffee

T-Mobile



COLEMAN MORRIS – DIRECTOR, Retail Brokerage
JLL
T: 404 995 2409 M: 404 219 7093
coleman.morris@am.jll.com – www.jllretail.com

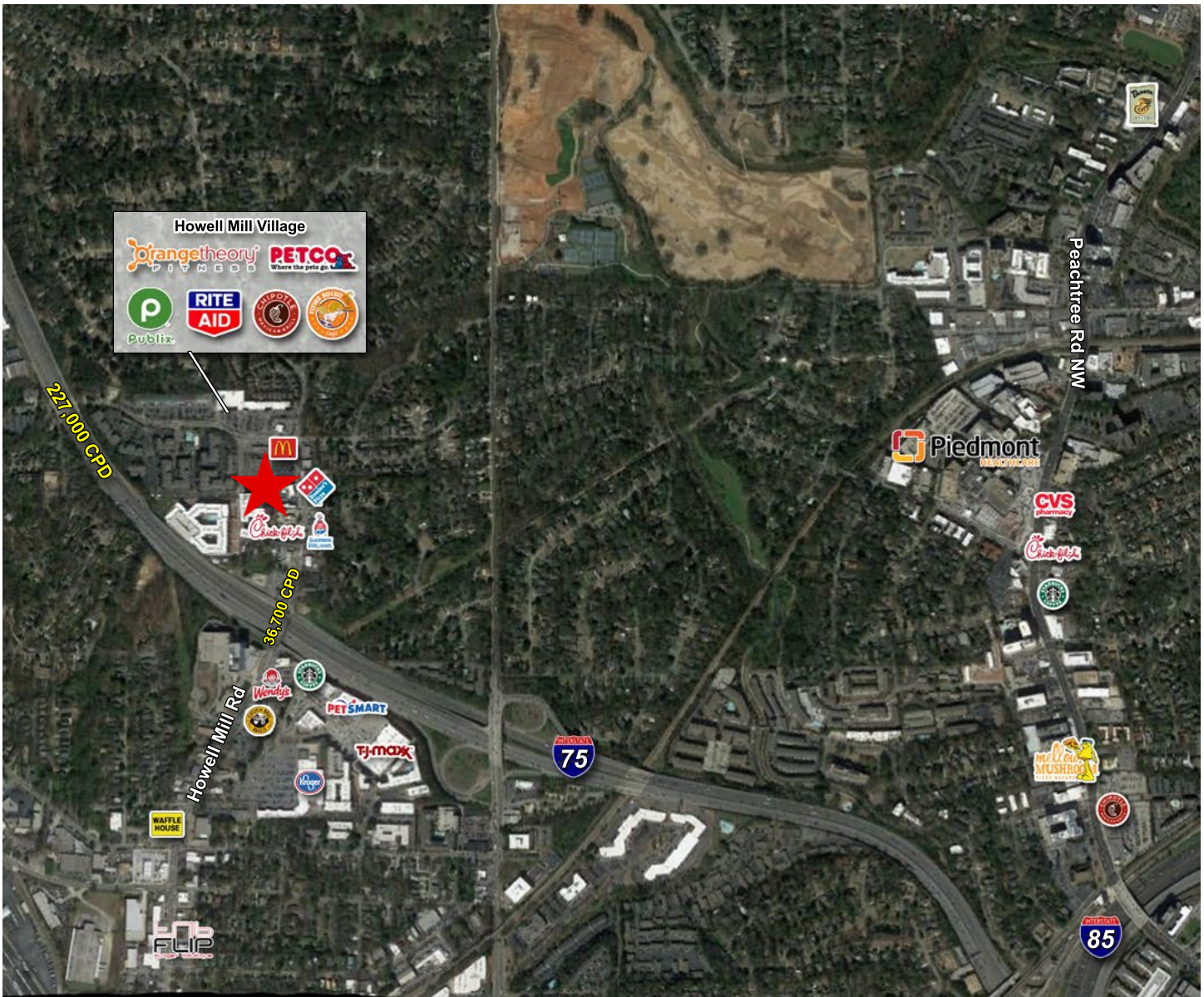
CASEY BRUMMETT – ASSOCIATE, Retail Brokerage
JLL
T: 404 995 2421 M: 404 834 1297
casey.brummett@am.jll.com – www.jllretail.com



HEALEY
WEATHERHOLTZ
PROPERTIES

Howell Mill

1952-1985 HOWELL MILL ROAD, ATLANTA, GA 30318



TRAFFIC COUNTS



36,700 CPD
at Howell Mill



227,000 CPD
HWY 75

2018 DEMOGRAPHICS

	1 MILE	3 MILE	5 MILE
Population	16,743	126,397	331,559
Households	8,619	62,703	160,487
Average Household Income	\$127,347	\$117,385	\$109,034

COLEMAN MORRIS – DIRECTOR, Retail Brokerage
JLL
T: 404 995 2409 M: 404 219 7093
coleman.morris@am.jll.com – www.jllretail.com

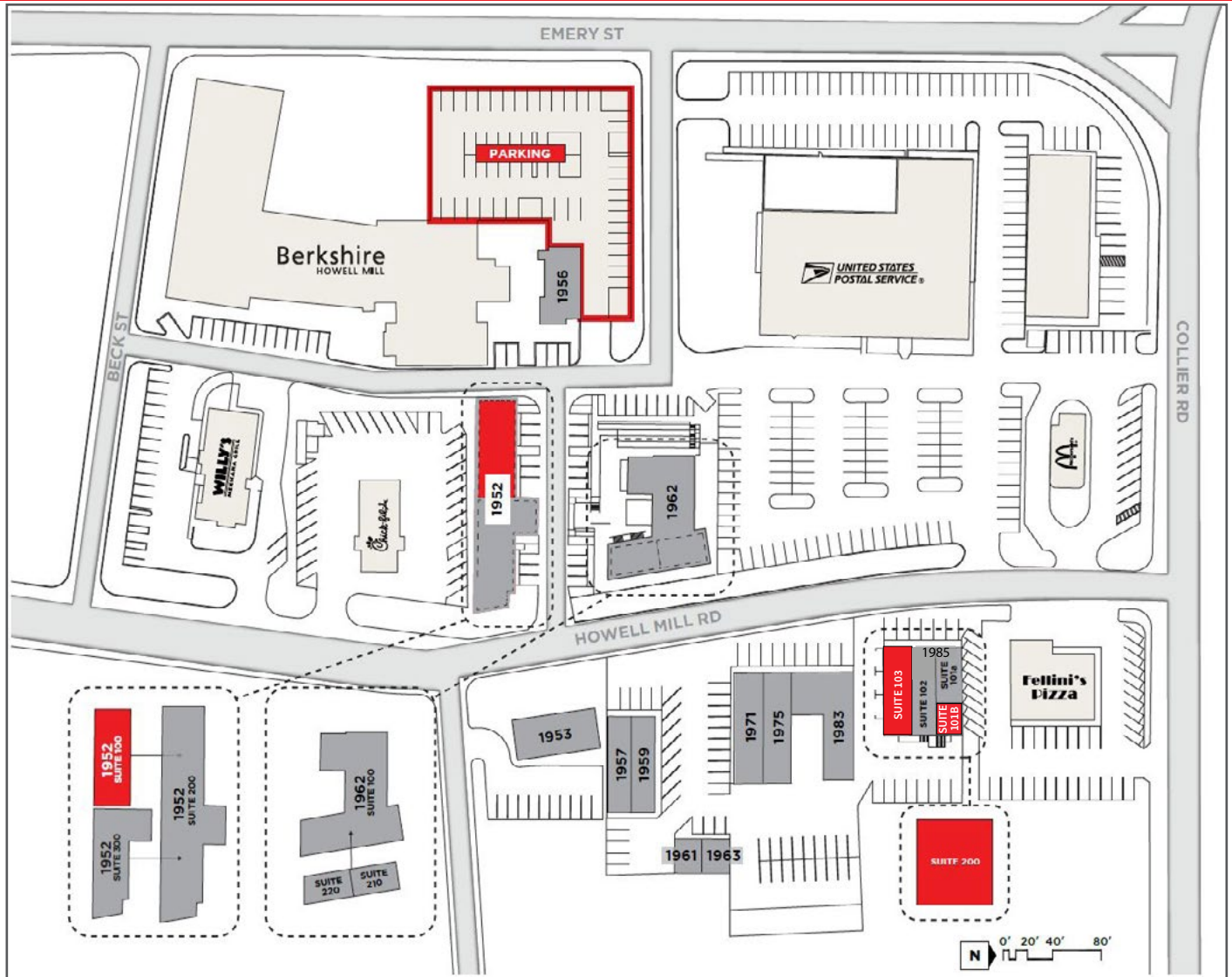
CASEY BRUMMETT – ASSOCIATE, Retail Brokerage
JLL
T: 404 995 2421 M: 404 834 1297
casey.brummett@am.jll.com – www.jllretail.com



HEALEY
WEATHERHOLTZ
PROPERTIES

Howell Mill

1952-1985 HOWELL MILL ROAD, ATLANTA, GA 30318



SUITE	TENANT	RSF	SUITE	TENANT	RSF
1952, SUITE 100 AVAILABLE (PLAZA LEVEL)		1,603	1962, Suite 220	Healey Weatherholtz Properties	1,200
1952, Suite 200	Cultivate	3,773	1963	Doughnut Dollies	625
1952, Suite 300	J. Ryan Duffey Architect	1,617	1971	Zunzi's	2,195
1953	Havoline Express Lube	1,872	1975	T-Mobile	2,135
1956	Circle Sushi	1,600	1983	Mr. C's Bar and Grill	2,800
1957	Dentist	1,600	1985, Suite 101a	Arden's Garden	960
1959	Dominos Pizza	1,600	1985, SUITE 101b AVAILABLE		440
1961	Barber Shop	625	1985, Suite 102	Li's Massage & Spa	1,300
1962, Suite 100	Howell's	4,888	1985, SUITE 103 AVAILABLE SOON		1,320
1962, Suite 210	Dana Lynch Design	1,431	1985, SUITE 200 AVAILABLE (TERRACE LEVEL)		4,008

COLEMAN MORRIS – DIRECTOR, Retail Brokerage
JLL
T: 404 995 2409 M: 404 219 7093
coleman.morris@am.jll.com – www.jllretail.com

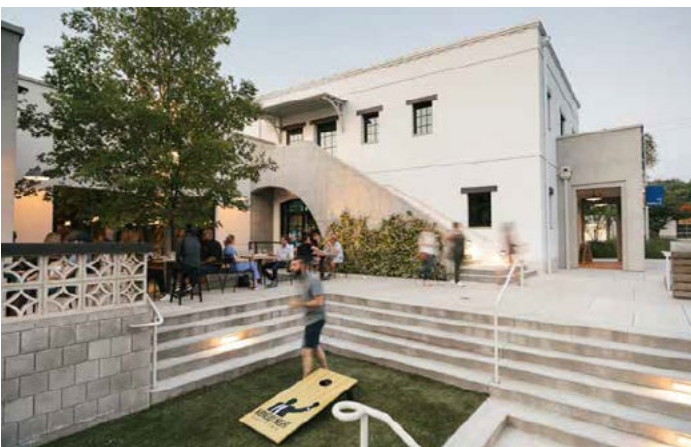
CASEY BRUMMETT – ASSOCIATE, Retail Brokerage
JLL
T: 404 995 2421 M: 404 834 1297
casey.brummett@am.jll.com – www.jllretail.com



HEALEY
WEATHERHOLTZ
PROPERTIES

Howell Mill

1952–1985 HOWELL MILL ROAD, ATLANTA, GA 30318



DISCLAIMER

© 2018 Jones Lang LaSalle IP, Inc. All rights reserved. All information contained herein is from sources deemed reliable; however, no representation or warranty is made to the accuracy thereof.

