

Peachtree City Marketplace

200 MARKET PLACE CONNECTOR, PEACHTREE CITY, GA 30269



Anchored by Staples and IHOP and located adjacent to Ethan Allen, Chilis, Taco Mac, Longhorn Steakhouse, The Avenue of Peachtree City, Home Depot and Walmart.

- Traffic light entrance with 5 access points
- Combined traffic counts of 73,030 vehicles per day
- Extremely strong demographics with Average Household Incomes above \$100,000 in one, three and five mile rings

Located in the center of Peachtree City, a planned community which has received numerous national recognitions including:

- Best Place to Raise a Kid, Bloomberg Business Week
- Top 4 Places to Retire in Georgia, WSJ MarketWatch
- Top 100 Safest Cities in the US, NeighborhoodScout.com
- Top 5 Healthiest Counties in Georgia
- Highly Rated Fayette County Schools

2017 DEMOGRAPHICS	1 MILE	3 MILE	5 MILE
Population	5,142	30,044	58,406
Average Household Income	\$100,915	\$111,092	\$113,032

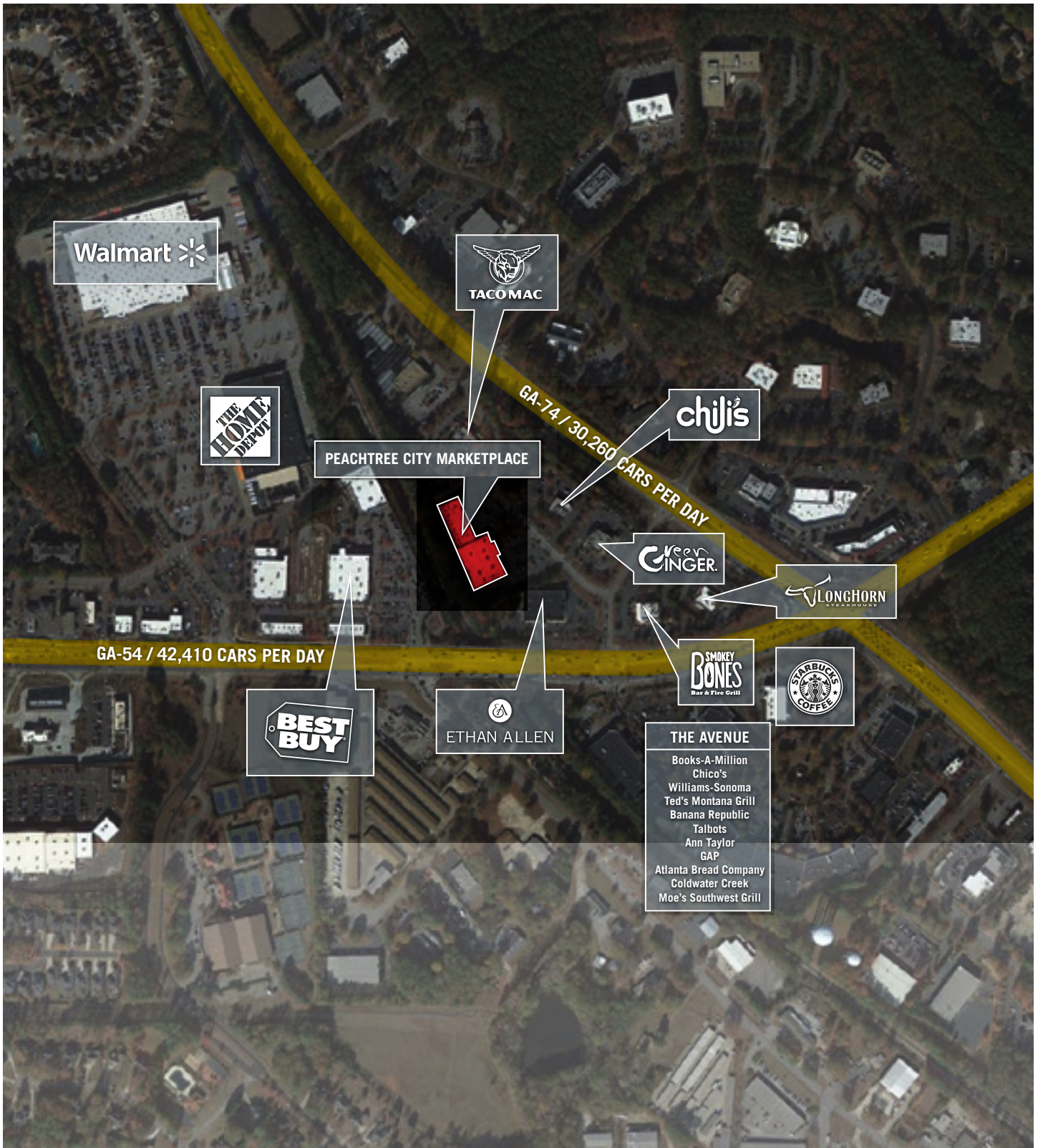


COLEMAN MORRIS – Director, Retail Agency Leasing
JLL
T: 404 995 2409 M: 404 219 7093
coleman.morris@am.jll.com – www.jllretail.com

CASEY BRUMMETT – Associate, Retail Brokerage
JLL
T: 404 995 2421 M: 404 834 1297
casey.brummett@am.jll.com – www.jllretail.com



HEALEY
WEATHERHOLTZ
PROPERTIES

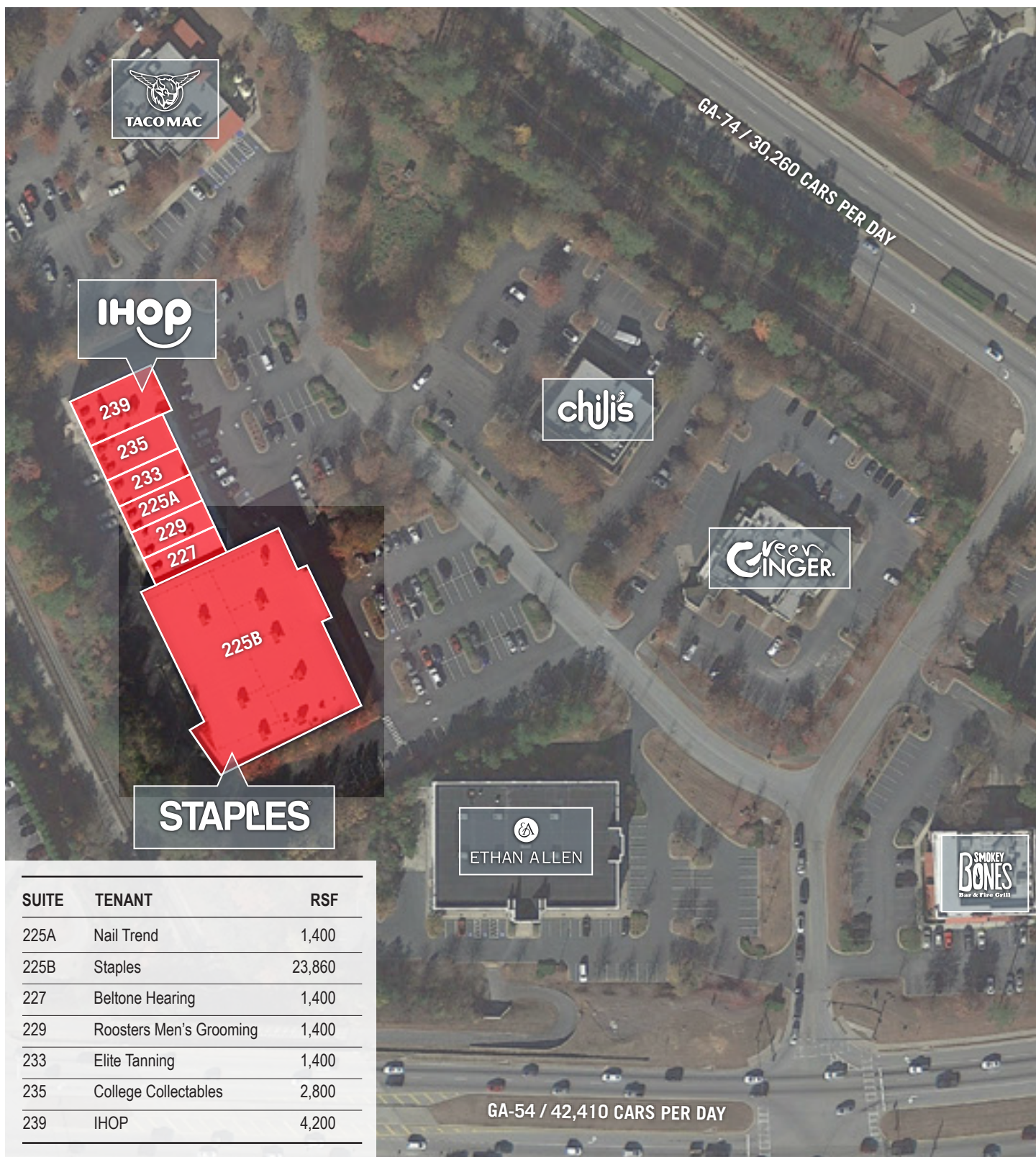


COLEMAN MORRIS – Director, Retail Agency Leasing
JLL
T: 404 995 2409 M: 404 219 7093
coleman.morris@am.jll.com – www.jllretail.com

CASEY BRUMMETT – Associate, Retail Brokerage
JLL
T: 404 995 2421 M: 404 834 1297
casey.brummett@am.jll.com – www.jllretail.com



HEALEY
WEATHERHOLTZ
PROPERTIES



COLEMAN MORRIS – Director, Retail Agency Leasing
JLL
T: 404 995 2409 M: 404 219 7093
coleman.morris@am.jll.com – www.jllretail.com

CASEY BRUMMETT – Associate, Retail Brokerage
JLL
T: 404 995 2421 M: 404 834 1297
casey.brummett@am.jll.com – www.jllretail.com



HEALEY
WEATHERHOLTZ
PROPERTIES

DISCLAIMER

© 2017 Jones Lang LaSalle IP, Inc. All rights reserved. All information contained herein is from sources deemed reliable; however, no representation or warranty is made to the accuracy thereof.

